



TREK²HEALTH

**EXCLUSIVE PLUMBING INDUSTRY
PRE-REGISTRATION EVENT**

SUNDAY 26/03/2023
EVENT REGISTRATION
AND STARTING TIMES
0700-0800

**8.5KM CIRCUIT OF THE
ENOGGERA RESERVOIR
THE GAP**

COVID SAFE EVENT

**FUNDS RAISED GO DIRECTLY TO
WELLNESS WITHIN THE PLUMBING
INDUSTRY. MENTAL HEALTH EXPERTS AT
TREK HOUSE VILLAGE AFTER TREK**



TREK²HEALTH
RESILIENCE VIA EARTH

REGISTER NOW
WWW.TREK2HEALTH.ORG.AU



TREK2HEALTH

Welcome to the Inaugural REECE Trek proudly supporting Trek2Health – The REECE TREK2HEALTH event will immerse ourselves in nature for an epic morning of fun, fitness and fundraising in support of the mental health and wellness of our plumbing industry workers and colleagues.

The Inaugural REECE TREK2HEALTH EVENT, proudly supporting Mental Health Awareness within the plumbing industry – a 10-person Team oriented Trek that will take place on SUNDAY 26/03/2023 and will follow the current COVID-19 safety Guidelines.

The REECE TREK2HEALTH EVENT will be hosted at the Trek2Health Event Village - a beautiful 1890's Queenslander situated at The Gap right on the doorstep of the Enoggera Reservoir. Event registrations will open at 0730 and close at 0800 and participants will be provided with fruit, muesli bars and water upon arrival at the REECE TREK2HEALTH EVENT Village.

Once participants have completed their Trek, they will be rewarded with a light BBQ and cold drink upon their return to the Event Village. When participants arrive at Registration, they will receive an entry bib and facemask Bandana, your Team can commence their journey once they are ready. Due to COVID-19 protocols Teams will be embarking on their journey separately. The winners of our fundraising prizes and raffle prize draw will be announced at the completion of the event. There is ample public car parking available within the area, that is a short 50 metre walk to the Event Village.

The REECE TREK2HEALTH EVENT consists of an 8.5km walk on wide fire trails, around the picturesque Enoggera Reservoir and will take approximately 2 hours. This outstanding Trek offers a few short, sharp hills along the way that may test you, but the Trek delivers some of Brisbane's best bush landscape and lake views. The

event will also have Support Staff – who have operated in these D'Aguilar ranges for over 15 years - to offer their support at several stations throughout the Trek, should you need water or support. Participants can still request support between these stations though, as we well have a team of Medical professionals roaming the route in 4x4 vehicles.

This event is a great way to get in touch with nature, get some exercise and support a great cause. REECE TREK2HEALTH EVENT 2023, 26th of March 2023 will follow the current COVID-19 safety Guidelines.

REECE TREK2HEALTH EVENT is a plumbing community fundraising event and participants are encouraged to open an individual and/or team fundraising page, which can be completed during the registration process. Each of the capped 30 teams of 10 participants to fund raise \$1600.00 per team, also there will be prizes for the highest fund raising teams as well for individuals who raise \$500.00 (exclusive official Trek2Health wilderness jacket).

All funds raised will go directly to the plumbing industry workers and colleagues to enter our private wellness module 1 programs, it is our collective aim to place 30 people from the plumbing industry in the program each quarter.

2023

REECE TREK2HEALTH EVENT

SUNDAY 26/03/2023

8.0KLM – Enoggera Reservoir Circuit The Gap



Green – 8.0KLM route
Toilets available

Car parking and
Finish line Village

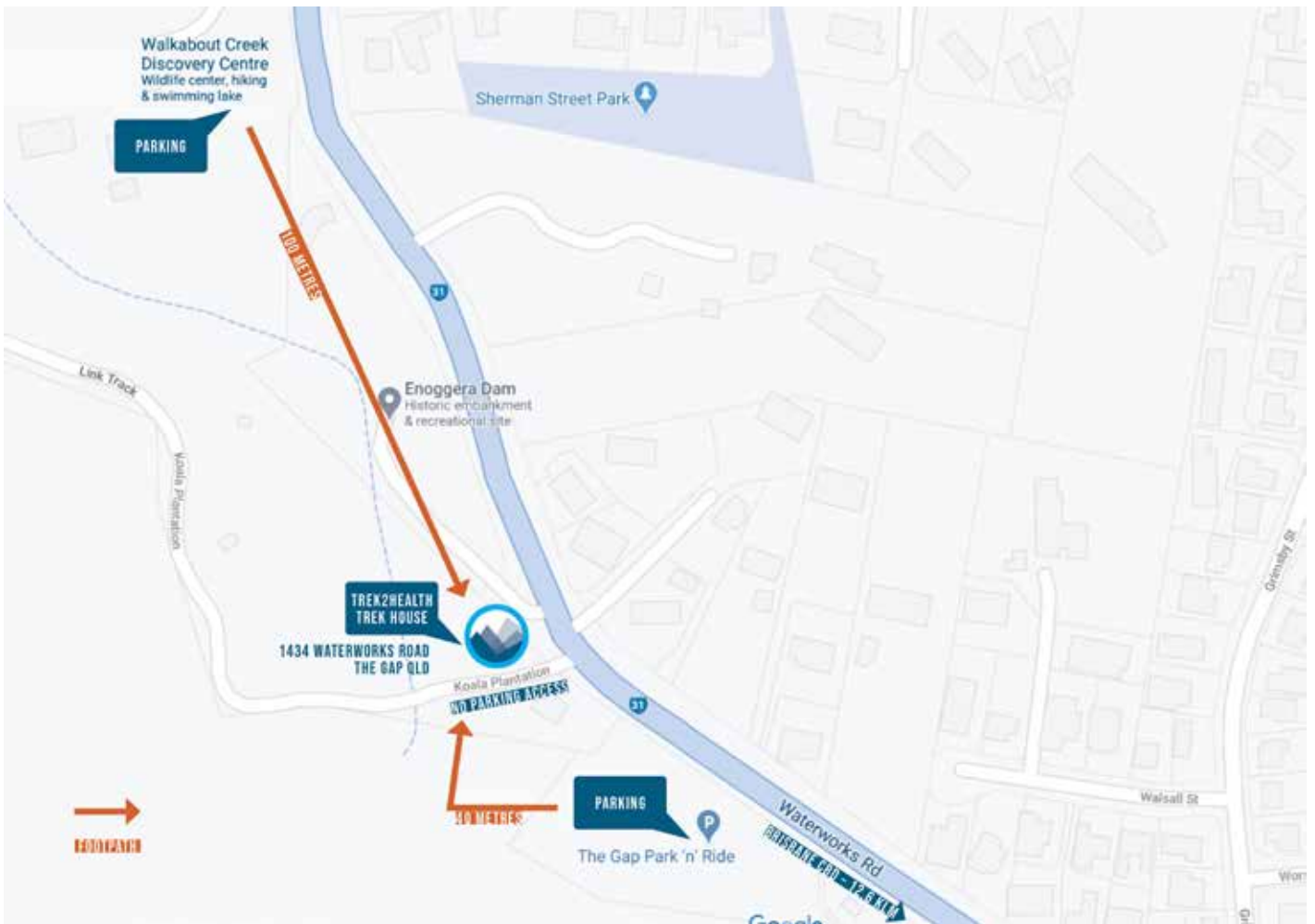
ENOGGERA RESERVOIR CIRCUIT THE GAP

TRAIL PROFILE 8.0KLM



REECE AND TREK2HEALTH REECE TREK2HEALTH EVENT – PLUMBING INDUSTRY COMMUNITY LAKE WALK – 8.5KM

TEST YOUR RESILIENCE AND ASSIST IN RAISING MUCH NEEDS FUNDS FOR OUR TREK RESILIENCE MODULES SUNDAY 26/03/2023 – REECE TREK2HEALTH EVENT VILLAGE OPENS 0730 AT THE BEAUTIFUL TREK2HEALTH HEADQUARTERS – 1434 Waterworks Road The Gap – Please see map below for public parking options



FAQS

CAN I MAKE MY OWN WAY TO THE START POINT?

All trekkers must attend a briefing which is held on the bus prior to the trek commencement, therefore all trekkers must meet at the meeting point.

CAN CHILDREN UNDERTAKE THE TREK?

This event is being conducted in remote areas, through terrain that is rough, steep and sometimes with no or limited vehicle access. Therefore, only children aged 16+ can participate and must be accompanied by an adult.

DO I HAVE TO FUNDRAISE?

You are registering for an event when you participate in our treks. We highly encourage all participants to fundraise as a team of individuals. Our fund raising target is \$20,000.00, there are great prizes for the highest individual and teams fund raising. Trek2Health are here to help! When you register select your fund raising target and your fundraising page will automatically generate your personalised page. – this makes asking for and receiving donations easy. And feel free to give Trek2Health call on 0401 713 039 to discuss your fundraising ideas.

WHAT IF I NEED HELP WHILST TREKKING?

If you need medical assistance, to reduce the distance you walk you can speak to one of the medics and/ or support vehicle crew who will assist you. This can be arranged by calling either 0401 713 039 or 0414 311 972.

WHAT/HOW MUCH FOOD/WATER SHOULD I BRING ON THE TREK?

You will need 1 litre of water at the commencement of the trek. There will be mobile car drink stations at all times, all support vehicles will carry water. Participants will need to have enough snacks for this two hour walk. Please note we will have fresh fruit available prior to the trek.

WHAT HAPPENS IF I REGISTER BUT THEN CANNOT PARTICIPATE?

We do not refund registration fees or any money raised for Trek2Health, however if a trekker is unable to participate they may transfer their registration (but not fundraising) to another person by notifying Trek2Health in writing 3 days prior to commencement of the trek.

DO I NEED INSURANCE?

While we undertake all measures possible to ensure your safety, but you are responsible for your own health and wellbeing in the lead up to and during the event. Make sure you have the relevant health insurance and ambulance cover.

SAFETY

1. Use your personal discretion in the event of injury or emergency as to which of the following recommended procedures to use: - If the injury or emergency is considered life threatening ring 000. State your name and that you are participating in the REECE TREK2HEALTH TREK - If the injury or emergency is not considered life threatening alert the nearest Medic or Trek Leader or, if they are not in close proximity call 0401 713 039 or 0414 311 972, and inform them of the situation.
2. Teams are responsible for both their own and their team's behaviour. Contravention of any checkpoint property owner's regulations may lead to the team's withdrawal for the trek.
3. Teams must carry mobile phones, preferably on two different networks. It is highly recommended that one phone is connected to the Telstra Network. All phone numbers in use must be provided to event organisers on registration.
4. Prescription medication and pain killers are your own responsibility. These cannot be issued by First Aid.
5. It is recommended to keep a rain poncho on hand depending on forecast weather.
6. BUSH FIRE Alert officials if you site a bush fire on 0401 713 039 or 0414 311 972. An emergency evacuation plan will be enacted by your trek leader and the support network. Follow event officials' instructions and remain at a checkpoint if advised to do so by officials. In the unlikely event that you are trapped, TREK2HEALTH LTD will call emergency services on 000 or 112 from a mobile; attempt to find a safe position in water, away from trees (in clear ground), in low ground or dig a trench, cover your mouth and nose with a wet piece of clothing.

DRSABCD action plan



In an emergency call **triple zero (000)** for an ambulance

D

DANGER

Ensure the area is safe for yourself, others and the patient.

R

RESPONSE

Check for response—ask name—squeeze shoulders

No response

- Send for help.

Response

- make comfortable
- check for injuries
- monitor response.



S

SEND for help

Call Triple Zero (000) for an ambulance or ask another person to make the call.

A

AIRWAY

Open mouth—if foreign material is present:

- place in the recovery position
- clear airway with fingers.

Open airway by tilting head with chin lift.



B

BREATHING

Check for breathing—look, listen and feel.

Not normal breathing

- Start CPR.

Normal breathing

- place in recovery position
- monitor breathing
- manage injuries
- treat for shock.



C

CPR

Start CPR—30 chest compressions : 2 breaths

Continue CPR until help arrives or patient recovers.



D

DEFIBRILLATION

Apply defibrillator if available and follow voice prompts.

© St John Ambulance Australia. St John encourages first aid training as this information is not a substitute for first aid training.

CHECKLIST

Provided below is a suggested list of equipment that can help you and your team prepare for the trek ahead.

TREKKERS ON THE TRACK:

- FOOTWEAR – proven and trialled hiking shoe or boot
- SPARE LACES
- SOCKS – include spares
- GATORS – lightweight keep gear out of boots/shoes
- NICKS /SKINS/TIGHTS – prevent chafing, support recovery and performance.
- CLOTHING – consider all weather conditions - ensure you have clothing suitable for windy raining, hot and cold conditions.
- LIGHTWEIGHT GLOVES – Keep the hands warm
- HATS – baseball cap, lightweight beanie, broad-brimmed lightweight hat – personal preference
- BUFF – Multi use – sun protection, dust protection, neck protection, sweat, etc.
- SUNGLASSES
- HIKING POLES – personal preference
- SMALL CAMELPAK TO CARRY GEAR – lightweight, durable, tested and trialled
- HYDRATION – Camelpak or water bottle.
- SNACKS – food packs specially designed, lightweight, individual food packs.
- PERSONAL MED KIT – lightweight – covers personal medications, band aids, tape, chafing, Insect repellent, sunscreen, hand gel, painkillers, etc. – Please note trek medics and first aid tents are also available.
- COMMUNICATIONS – mobile phone (fully charged)
- PERSONAL ID

Carry only what you need on the course, anything extra should be given to the trek leaders. Remember to bring your light snacks, hydration and first aid will be provided on course and at rest checkpoints. Please note that you are responsible to bring water container, either camel pack or water bottle, no cups at hydration stops.

TERMS & CONDITIONS

TREK2HEALTH LTD are the event organisers of TREK2HEALTH COMMUNITY TREK SERIES. If we deem the route unsafe (due to but not limited to heavy rain, lightning, high winds, bushfire or 'acts of god') we may, at our sole discretion, re-route The TREK2HEALTH COMMUNITY TREK SERIES, find an alternative shortened course, or cancel the event. If the event is cancelled, re-routed or shortened, no refund of registration fees, fundraising monies or transfer to another TREK2HEALTH COMMUNITY TREK SERIES event will be made. Due to the nature of our events and the months of preparation involved, the event will not be re-scheduled to any other weekend. We also reserve the right to change the route or checkpoint locations or distances as necessary. Any changes will be communicated to participants prior to the event.

1. All team members must be aged 18 or above unless approved by the organiser in advance in writing and will only be so approved where a parent or guardian has signed the appropriate form(s). The minimum age for students participating in the event is 16 years of age and they must be accompanied by an adult for the entirety of the course or where multiple adults are involved for each leg. Where necessary adults accompanying minors must be Blue Card certified.

2. At the start of the event, any team(s) must have a minimum of two members with a maximum of six members

3. Teams must register and check in during their allocated check in period (refer to the Critical Times on the first page). Please note that the buses are unable to wait for late arrivals.

4. There is one major checkpoint throughout the course excluding the start and finish points (excluding 12km trek). All trek groups must remain together between checkpoints. All participants must check in and check out as a group at each checkpoint. Checkpoint staff will not check in or check out a team until all members are accounted for.

5. Do not drop litter on the ground. Please respect the environment and carry out all your rubbish or discard at

any bins provided. (This includes cigarette butts. Do not leave butts in tall grass or other flammable materials.) Anyone observed littering will be removed immediately from the event.

6. Under no circumstances are any participants to be left unattended. If a participant is seriously injured and cannot be moved, one person must remain with them while another participant alerts the accompanying medical personnel. At all times an TREK2HEALTH LTD Event Medic should be no further than 500 metres away.

7. If you want to withdraw during the event, you must first report to the mobile Trek Group Leader or mobile Trek Group Medic who will sign you out. You will then hop into a transport vehicle and dropped off at finish line. at which time you will have your entry bib code recorded as having left the event.

8. If you do not notify event organisers of your intention to leave a checkpoint prior to doing so, this will result in an emergency services response. This can waste valuable resources, which may be required elsewhere and for which you may be held financially accountable.

9. Identification (ie Bibs) must be worn at all times during the event.

10. A team must notify TREK2HEALTH LTD organisers of any change of team members via email. No substitutions will be allowed once the event starts. Any team found to be substituting without prior notification or during the event will be withdrawn.

11. If, in the opinion of medical personnel, a team member is unable to continue for medical reasons the event organisers reserve the right to remove that member from the event.

12. Every participant must have completed their training, so they are fit enough to complete their chosen distance.

13. All participants must read the Trekkers Handbook and be fully prepared on the morning of the event to commence trek with all equipment and provisions.

reece™

TREK2HEALTH

